

Köttermann Laboratory Furniture.

Functional and flexible.



We fulfill your requirements.

An integrated furnishing concept.



Subject to technical modifications
Status: May 2018

Contents

| | |
|----|--|
| 02 | Overview of laboratory furniture |
| 04 | Tall storage cabinets |
| 07 | Underbench cabinets |
| 10 | Wall-mounted and top-mounted cabinets |
| 13 | Cell cabinets |
| 16 | Worktops |
| 20 | Single benches and frames |
| 23 | Basins and sinks |
| 25 | Accessories |
| 27 | Contact |

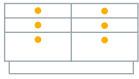
Overview of laboratory furniture

Laboratories for the future – with safety

The EXPLORIS® laboratory from KÖTTERMANN is the result of creativity plus innovation – intelligent furnishing solutions, created to determine exact analysis values and ensure an outstanding product quality.

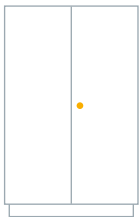
The unique modular system always forms a functional, shapely and ergonomically well-designed unit. Everything is designed to facilitate and economically optimize work processes in the laboratory.

- **Perfectly designed down to the smallest detail**
 - highly flexible
 - combinable
 - easily exchangeable and retrofittable
- **Safety for the people in the laboratory**
 - minimize the risks in the laboratory
- **Well organised**
 - individually adapted to each other
 - lots of practical accessories
- **Worktops**
 - 10 materials for every requirement
 - harmonic colouring
 - typical octagonal corners
- **Special cabinets**
 - Suspension files
 - Wardrobe pull-outs
 - Pull-out cabinets
 - Installation cabinets
 - Corner cabinets etc.



Underbench cabinets

Contents can be well stowed and ready to hand



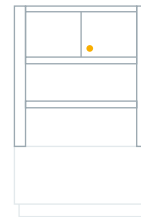
Tall storage cabinets

Storage space with many extras



Wall and top-mounted cabinets

Tidy instead of overfilled



Cell cabinets

Transparency at island benches



Worktops

Customised to your requirements



Single benches

Mobile, load-bearing, extremely precise



Basins and sinks

Customised wet cells

Benefits

- Material: electrolytically galvanized steel
 - recyclable
 - robust and durable
 - reduces the fire load
- Coating with optimal UV and chemical resistance
- Maximum storage space even in small laboratories
- Large number of variations
- Fast production / short delivery times
- Independent certifications
- Quality
 - double-shell, sound-insulated door and drawer fronts
- Smooth and quiet
 - comfort pull-outs with air-damped automatic pull-in function
- Aesthetic and clear
 - harmonic colouring
 - ergonomic design

Equipment Options - Cabinets

- Drawer dividers
- Flexible interior design
 - partially with glass doors
- Different front variants
- With and without lock
- Height adjustment
- With shelves and pull-outs

Design Cabinets

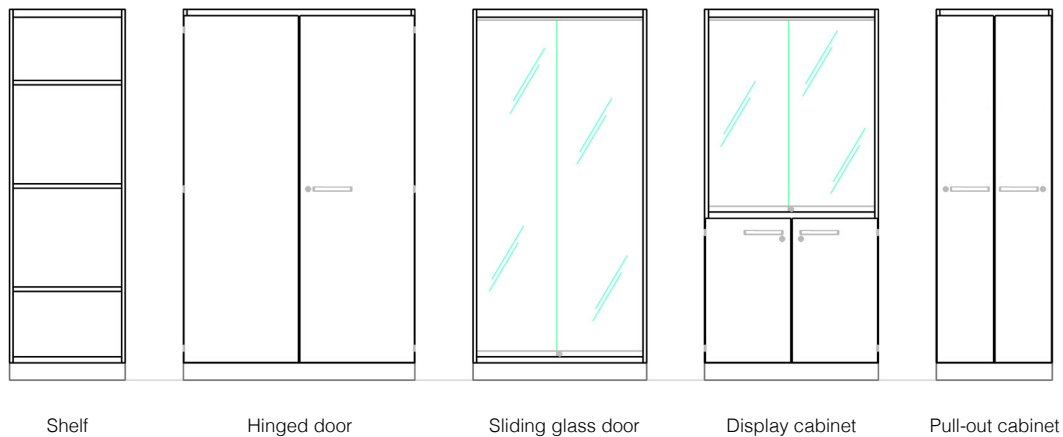
| | | |
|---|--|--|
| Material | Quality steel (1.0330, electrolytically galvanised, coated with polyurethane) | |
| Colour | Arctic White (NCS S 0505 R80B), similar RAL design 260 90 05 | |
| Pedestal colour | Anthracite (NCS S 8500N), similar RAL design 00 20 00 | |
| Carcass | Grid height | Exterior: 480 mm, 630 mm, 780 mm Interior: less 30 mm |
| | Grid width | Exterior: 300 mm, 450 mm, 600 mm, 900 mm, 1 200 mm Interior: less 40 mm |
| | Depth | 516 mm, interior: 500 mm |
| Doors | Sound insulated in double-shell design, clip hinge, opening angle 270° | |
| Bow-type handle | Zinc die cast, matt chrome-plated, suitable for labels | |
| Lock | Lock system with interchangeable cylinder, Central lock with pull-out protection for cabinets with stacked drawers | |
| Drawers <small>High-quality drawers Automatic pull-in function and stop damping (full extension drawers)</small> | Galvanised steel, full-extension drawer in ball bearing cage design, sound insulated front in double-shell design, bow-type handle: zinc die cast, matt chrome-plated, suitable for labels | |
| | Grid height | 150 mm, 300 mm |
| | Usable interior height | 110 mm (for 150 mm grid height) 260 mm (for 300 mm grid height) |
| | Grid width | Exterior: 450 mm, 600 mm, 900 mm, 1 200 mm |
| | Usable interior width | Grid width: less 100 mm |
| | Load capacity | In general: 30 kg, in cabinets on castors: 20 kg |
| Shelves | Load capacity | 30 kg |
| Adjustment | Pedestal | – 5 / + 15 mm |
| | C/A frames | – 5 / + 20 mm |

Tall storage cabinets

Storage space with many extras



Dimensions Tall storage cabinets



Tall storage cabinets

Dimensions in mm

| | Width | | | | Height | Carcass depth | |
|--------------------------|-------|-----|-----|------|--------|---------------|-----|
| Without doors | – | 600 | 900 | 1200 | 1920 | 350 | 500 |
| With hinged doors | – | 600 | 900 | 1200 | 1920 | 350 | 500 |
| With sliding glass doors | – | – | 900 | 1200 | 1920 | 350 | 500 |
| Display cabinet | – | – | 900 | 1200 | 1920 | 350 | 500 |
| Wardrobe cabinet | – | 600 | – | 1200 | 1920 | – | 500 |
| With pull-out doors | 300 | 600 | – | – | 1920 | – | 500 |

Types

- Open shelf
- Hinged doors
- Sliding glass doors
- Display cabinet
- Wardrobe cabinet
- Pull-out doors (pharmacy cabinet)

Description

In order for everything to find its place in the laboratory, **EXPLORIS® tall storage cabinets** can be individually configured. EXPLORIS® offers a comprehensive range of tall storage cabinets so everything fits in the laboratory. The spectrum ranges from open shelves to cabinets with hinged or sliding glass doors, as well as to display and wardrobe cabinets.

The flexibility of the interior is demonstrated by the numerous options that are available, such as height adjustable shelves and pull-outs that facilitate easy access to the contents of the cabinet.

Designs

- Grid height
 - exterior: 1 920 mm
 - interior: 1 760 mm
- Grid width
 - exterior: 300 mm, 600 mm, 900 mm, 1 200 mm
 - interior: less 40 mm
- Depth
 - carcass depth: 350/500 mm
 - exterior depth: 350/500 mm (open or sliding glass doors)
 - exterior depth: 366/516 mm (with doors)
- Load capacity
 - 180 kg additional load
- Doors
 - sound insulated in double-shell design
 - clip hinge
 - opening angle 270°
 - sliding doors made of laminated safety glass

Properties and Benefits

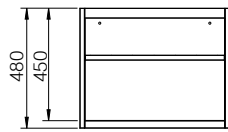
- Two depths
- Various front designs
- Flexible interior design
- Suitable for common binders
- Additional storage space through top-mounted cabinets (see page 10)

Underbench cabinets

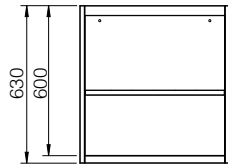
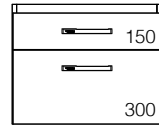
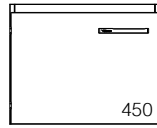
Contents well stowed and ready to hand



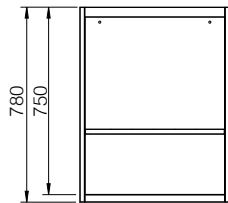
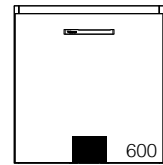
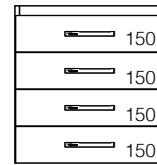
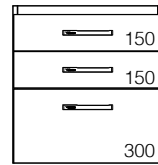
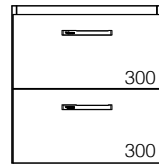
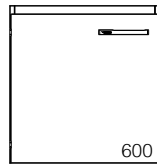
Dimensions Underbench cabinets



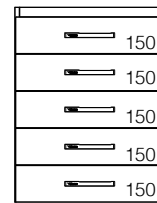
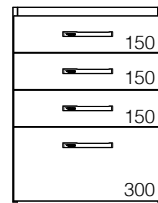
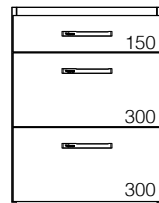
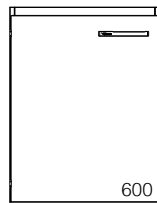
Carcass height 480mm



Carcass height 630mm



Carcass height 780mm



Underbench cabinets

Dimensions in mm

| | Width | | | | Height | | Carcass depth | |
|-------------------------------------|-------|-----|-----|-------|--------|-----|---------------|-----|
| With steel pedestal | 450 | 600 | 900 | 1 200 | 720 | 870 | 350 | 500 |
| With steel pedestal for front sinks | 300 | – | – | – | 720 | 870 | – | 500 |
| With castors | 450 | 600 | 900 | 1 200 | 580 | 730 | – | 500 |
| Suspended in the frame | 450 | 600 | 900 | 1 200 | 480 | 630 | – | 500 |

Types

- Special cabinets
 - installation cabinets
 - waste collector
 - for office utensils
 - corner cabinets
- An individual worktop substructure is possible due to the various types of KÖTTERMANN underbench cabinets. In this way, comfortable seating niches or full surface substructures with underbench cabinets for an optimal space utilization are created. Corner cabinets maximize the space utilization through easy-to-use and accessible Le Mans pull-outs.

Designs

- Grid height
 - exterior: 480 mm, 630 mm, 780 mm
 - interior: less 30 mm
- Grid width
 - exterior: 450 mm, 600 mm, 900 mm, 1 200 mm
 - interior: less 40 mm
- Depth
 - exterior: 516 mm
 - interior: 500 mm
- Load capacity
 - 120 kg additional load
 - cabinets on castors: 100 kg additional load
- Doors
 - sound insulated in double-shell design
 - clip hinge
 - opening angle 270°
- Drawers
 - grid height 150 mm, 300 mm
 - usable interior height:
 - 110 mm (for 150 mm grid height)
 - and 260 mm (for 300 mm grid height)
 - grid width 450 mm, 600 mm, 900 mm, 1 200 mm
 - usable interior width less 100 mm
 - load capacity 30 kg; 20 kg for cabinets on castors
- Castors
 - castor set with 4 steerable castors, of which 2 lockable
 - height: 90 mm
 - load capacity: 150 kg

Description

Where to go with all the things you need in the lab? It is best to have them at hand directly under the worktop. Mobile as a cabinet on castors, suspended in frames or with steel pedestal – **EXPLORIS® under-bench cabinets** offer customized storage space.

Depending on the bench frame (type, height, width) or type of use, the following underbench cabinet variants are available for worktop substructures:

Pedestal underbench cabinet: Closes flush with the worktop and the floor. Enables maximum utilization of the available space under the worktop.

Cabinet on castors: Underbench cabinet on castors, which can be used flexibly. For example, cabinets on castors can be temporarily placed in seating niches. They fit under all frame types: C and A frames.

Suspended cabinet: Can be suspended in a C or A frame, allows cleaning under the cabinets.

Properties and Benefits

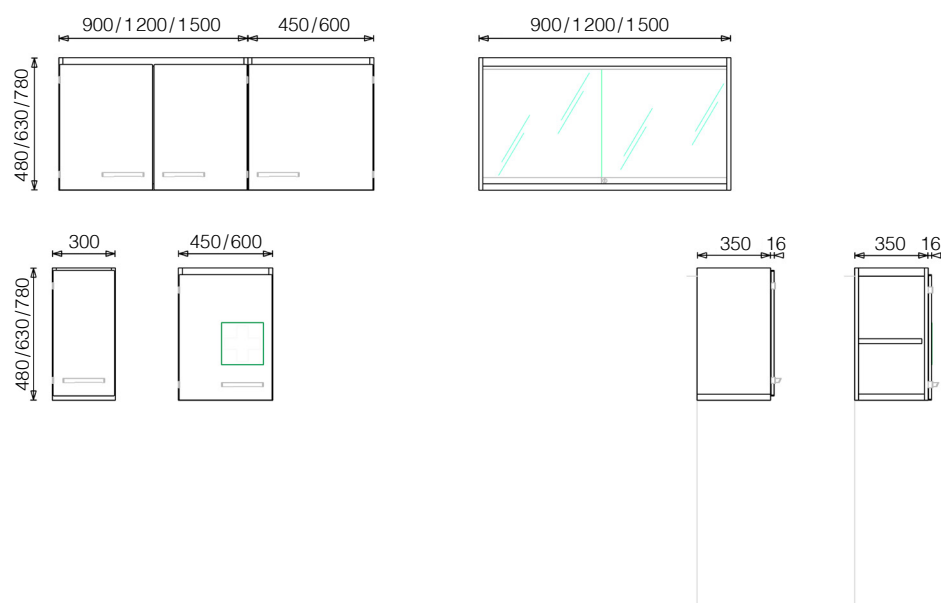
- Three substructure options
 - pedestal cabinets
 - suspended cabinets for bench frames
 - cabinets on castors
- Various combinations of doors and drawers

Wall and top-mounted cabinets

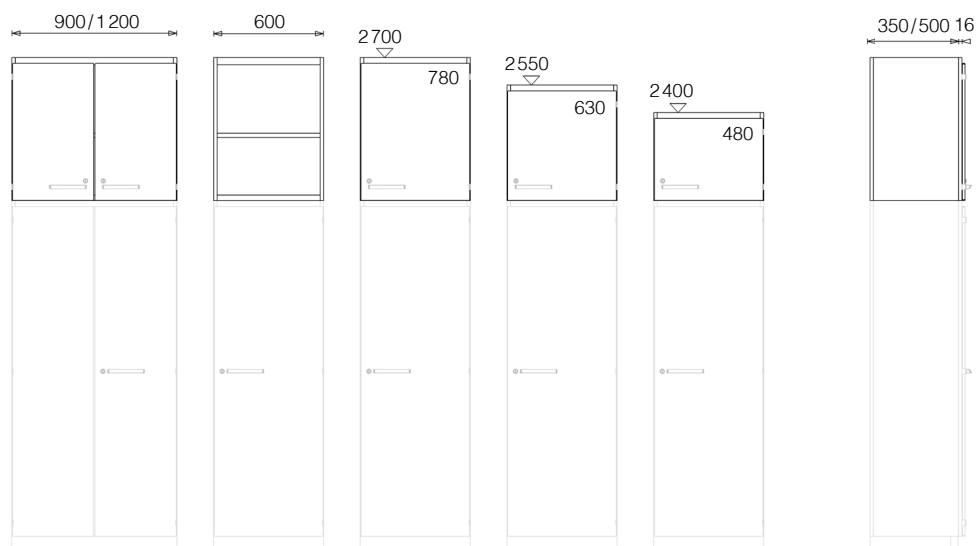
Tidy instead of overfilled



Dimensions Wall-mounted cabinets



Dimensions Top-mounted cabinets



Wall and top-mounted cabinets

Dimensions in mm

| | Width | | | | | | Height | | | Carcass depth | |
|--|-------|-----|-----|-----|------|------|--------|-----|-----|---------------|-----|
| Top-mounted cabinet for tall storage cabinet | – | – | 600 | 900 | 1200 | – | 480 | 630 | 780 | 350 | 500 |
| Wall-mounted cabinet to be mounted between the columns at island benches | – | – | 600 | 900 | 1200 | 1500 | 480 | 630 | – | 350 | – |
| Wall-mounted cabinets with hinged doors | – | 450 | 600 | 900 | 1200 | 1500 | 480 | 630 | 780 | 350 | – |
| Wall-mounted cabinet with sliding glass doors | – | – | – | 900 | 1200 | 1500 | 480 | 630 | 780 | 350 | – |
| First aid cabinet | – | 450 | 600 | – | – | – | 480 | 630 | 780 | 350 | – |
| Installation cabinet | 300 | – | – | 900 | – | – | 480 | 630 | 780 | 350 | – |

Types

- Wall-mounted cabinet
 - as open shelf, with hinged doors
 - or with sliding glass doors
 - as installation cabinet for cable bushing
 - as first aid cabinet
- Top-mounted cabinet for tall storage cabinets
 - as open shelf or with hinged doors
- Wall-mounted cabinet for service cells on island benches
 - open or with sliding glass doors
- First aid cabinet
- Installation cabinet

Designs Wall-mounted cabinets

- Grid height
 - exterior: 480 mm, 630 mm, 780 mm
 - interior: less 70 mm
- Grid width
 - exterior: 300 mm *, 450 mm, 600 mm, 900 mm, 1 200 mm, 1 500 mm
 - interior: less 40 mm
- Depth
 - open: 350 mm
 - with door: 366 mm
- Load capacity
 - 80 kg additional load

Designs Top-mounted cabinets

- Grid height
 - exterior: 480 mm, 630 mm, 780 mm
 - interior: less 70 mm
- Grid width
 - exterior: 600 mm, 900 mm, 1 200 mm
 - interior: less 40 mm
- Depth
 - open: 350 mm and 500 mm
 - with hinged door: 366 mm and 516 mm
- Load capacity
 - 80 kg additional load

Description

Even with little laboratory space, there is still room at the top for the storage of work material. **EXPLORIS® wall- and top-mounted cabinets** make optimal use of this space and solve any space problem.

Wall-mounted cabinets are mounted above the workstations. They create additional storage space for the laboratory material required, small devices or reagents. An effective use can help to avoid long distances and improve laboratory efficiency. Wall-mounted cabinets are available with open fronts, hinged doors or sliding glass doors.

Tall storage cabinets are available with open fronts, hinged doors or sliding glass doors, as well as installation and first aid cabinets

Top-mounted cabinets are placed on tall storage cabinets and expand the range of cabinets. They are available with open fronts and with hinged doors.

Properties and Benefits

- Large number of variations
- Maximum storage space in minimum laboratory space
- Optionally with practical ladder for top-mounted cabinets
- Wall-mounted cabinets also suitable for KÖTTERMANN service systems

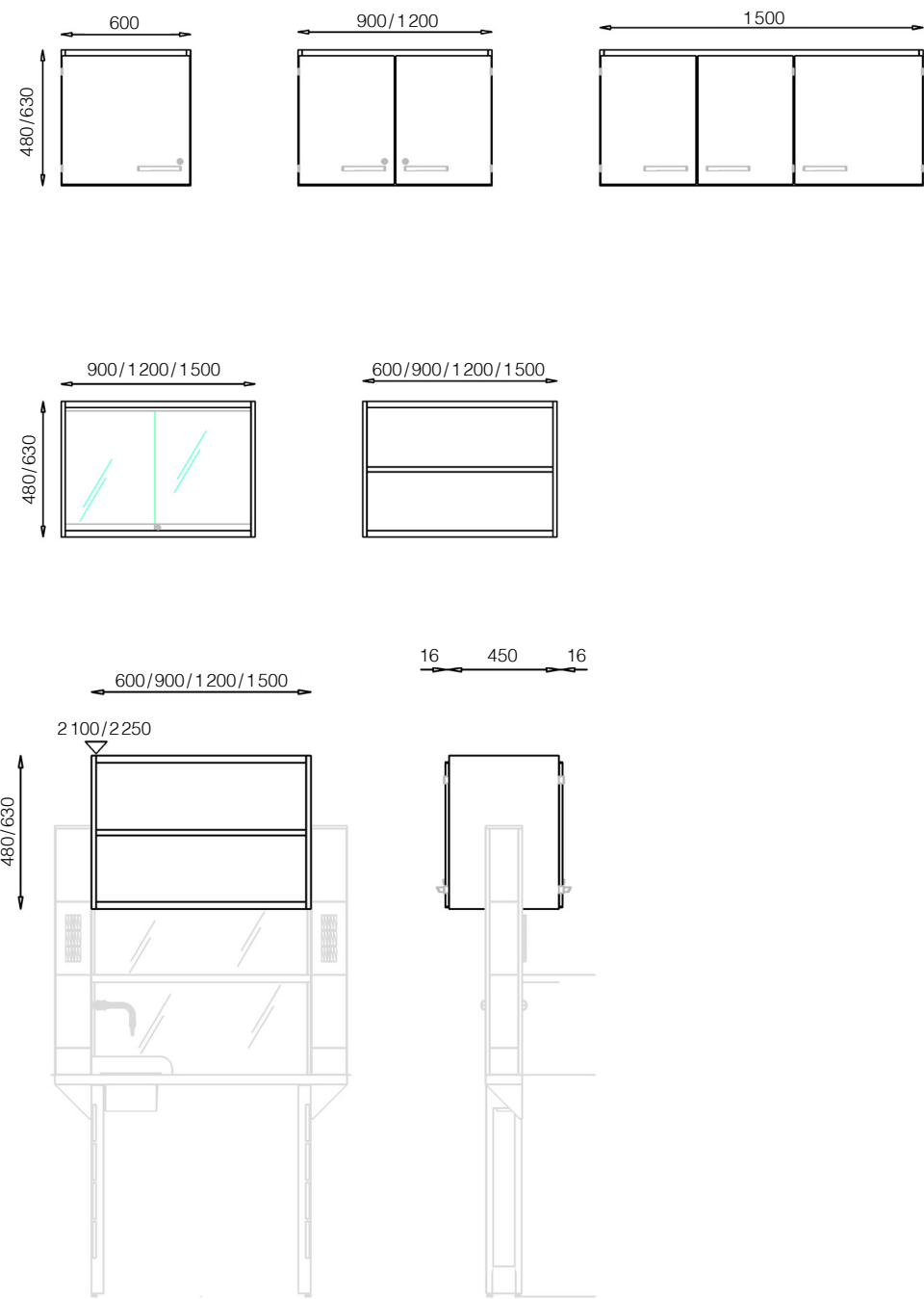
* only in case of cabinets for cable bushing

Cell cabinets

Transparency at island benches



Dimensions Cell cabinets



Cell cabinets

Dimensions in mm

| | Width | | | | Height | | Carcass depth |
|--------------------------|-------|-----|------|------|--------|-----|---------------|
| Open | 600 | 900 | 1200 | 1500 | 480 | 630 | 450 |
| With hinged doors | 600 | 900 | 1200 | 1500 | 480 | 630 | 450 |
| With sliding glass doors | – | 900 | 1200 | 1500 | 480 | 630 | 450 |

Types

- Open on both sides
- Two hinged doors
- Two sliding glass doors

Description

EXPLORIS® cell cabinets can be mounted between the columns. The special feature is that the access is possible from both sides, as long as it is an island bench. The cell cabinets create valuable storage space for reagents, laboratory material and small devices via the service cell workstations.

Cell cabinets are available with open design, hinged doors or sliding glass doors. The glass doors create a light, transparent look. A closed front creates a uniform and orderly overall appearance.

Designs

- Grid height
 - exterior: 480mm, 630mm
 - interior: less 70mm
- Grid width
 - exterior: 600mm, 900mm, 1 200mm, 1 500mm
 - interior: less 40mm
- Depth
 - open with sliding glass doors: 450mm
 - open with hinged doors: 482mm
- Load capacity
 - 80kg additional load

Properties and Benefits

- Access from both sides of the island bench
- Maximum storage space in minimum laboratory space

Worktops

Material for all purposes

General

The work in the laboratory is very diverse. Corresponding requirements must also be met with regard to **EXPLORIS® worktops**.

For example, when working with aggressive acids, ceramic worktops are best, stainless steel worktops should be used in the biological field, and melamine worktops are ideal for lower chemical loads.

For ergonomic working and optimal utilization of the laboratory surface, the worktops are also available in the typical KÖTTERMANN octagonal form. The harmonious colour matching of worktops and furniture not only looks good, but also creates a creative atmosphere.

Properties and Benefits

- Ten materials for every application
- Five materials with marine edge for catching spilled liquids
- Diverse design options through material combinations as well as rectangular and octagonal shapes
- Harmoniously matched colours

Designs

- Colours (except for stainless steel)
 - Baltic Blue (NCS S 2030 R70B)
 - White (similar RAL 9010)
 - Grey (similar RAL 7035)
- Forms
 - rectangular worktops
 - exterior corner worktops
 - octagonal and interior corner worktops
- Edge designs*
 - marine edge
 - thick edge
 - plain edge
- Dimensions
 - width: running metre
 - depths: 600mm, 750mm, 900mm
- Depths
 - before the service wall: 670mm and 820mm

Quality

- Lab-quality melamine TopResist® worktops offer high chemical resistance at the best price performance ratio.

Safety

- Worktops with surrounding marine edge catch spilled liquids

*Worktops without marine edge: melamine, melamine TopResist®, HPL solid-core material in standard quality, HPL solid-core material in laboratory quality, composite ceramic, glass

*Worktops with marine edge: Solid ceramic, HPL solid-core material in laboratory quality, polypropylene, epoxy, stainless steel

Chemical resistance of worktop materials

| | Melamine Standard | Melamine, TopResist® | Trespa TopLab® ^{BASE} | Trespa TopLab® ^{PLUS} | Ceramic/ Composite ceramic | Laminated glass | Stainless steel | Epoxy resin | Poly- propylene |
|---------------------------|----------------------|-------------------------|-----------------------------------|-----------------------------------|----------------------------------|--------------------|--------------------|-------------|--------------------|
| Solvents | | | | | | | | | |
| Ethanol | + | + | + | + | + | + | + | + | + |
| Isopropanol | + | + | + | + | + | + | + | + | + |
| Aceton | + | + | + | + | + | + | + | + | + |
| Ethylacetat | + | + | + | + | + | + | + | + | + |
| Chloroform | + | + | + | + | + | + | + | + | 0 |
| Diethylether | + | + | + | + | + | + | + | + | + |
| Toluol | + | + | + | + | + | + | + | + | – |
| n-hexane | + | + | + | + | + | + | + | + | + |
| Petroleum ether | + | + | + | + | + | + | + | + | 0 |
| Mineral acids | | | | | | | | | |
| Hydrochloric acid conc. | – | + | – | + | + | + | – | + | – |
| Sulphuric acid conc. | – | 0 | – | 0 | + | + | – | + | + |
| Sulphuric acid 50% | – | 0 | – | 0 | + | + | – | – | + |
| Nitric acid conc. | – | 0 | – | 0 | + | + | – | – | – |
| Phosphoric acid conc. | – | + | – | + | + | + | – | 0 | + |
| Hydrofluoric acid | – | 0 | – | – | – | – | – | – | + |
| Organic acids | | | | | | | | | |
| Formic acid conc. | – | 0 | – | + | + | + | + | + | – |
| Acetic acid conc. | + | + | + | + | + | + | + | + | + |
| Bases | | | | | | | | | |
| Caustic soda 20%ig | + | + | 0 | + | + | + | + | + | + |
| Ammonia solution conc. | + | + | + | + | + | + | + | + | + |
| Neutral solutions | | | | | | | | | |
| Formaldehyde 25% | + | + | + | + | + | + | + | + | + |
| Oxidants | | | | | | | | | |
| Hydrogen peroxide 30% | – | + | – | + | + | + | + | + | + |
| Potassium permanganate 5% | + | + | + | + | + | + | + | – | + |
| Potassium dichromate 5% | + | + | + | + | + | + | + | + | + |
| Iodine 5% in chloroform | + | + | + | + | + | + | + | + | – |
| Reducing agents | | | | | | | | | |
| Sodium sulphite 5% | + | + | + | + | + | + | + | + | + |
| Dyes | | | | | | | | | |
| Eosin | + | + | + | + | + | + | + | + | + |
| Methylene blue | + | + | + | + | + | + | + | + | + |
| Crystal violet | + | + | + | + | + | + | + | + | + |

+ Material is well suited, 0 Material is suited to a certain extent, – Material is inappropriate

Colours

Baltic Blue, Grey, White

**Office and evaluation**

Workplaces where paperwork is done.
Worktops without marine edge with
sufficient scratch resistance.

**Wet chemistry**

Workplaces working with larger quantities
of chemicals. Worktops with marine edge
with very high chemical resistance.

**Workplaces for devices**

Workplaces working with analytical
equipment and small quantities of
chemicals. Worktops without marine
edge with good chemical resistance.

**Biology**

Workplaces with special requirements for
hygiene and moderate chemical load.
Worktops without joints with good chemical
resistance.

Worktops

Dimensions in mm

| | Width | Depth |
|----------------|---------------|-----------------------|
| Rectangular | 600 - 2 400 * | 400 **, 600, 750, 900 |
| Octagonal 90° | 750 | 750 |
| | 900 | 900 |
| | 1500 | 750 |
| Octagonal 180° | 1 650 | 750 |
| | 1 800 | 900 |
| | 1 950 | 900 |
| Octagonal 360° | 1 500 | 1 500 |
| | 1 800 | 1 800 |

* ceramic max. 1 800 mm

** without marine edge

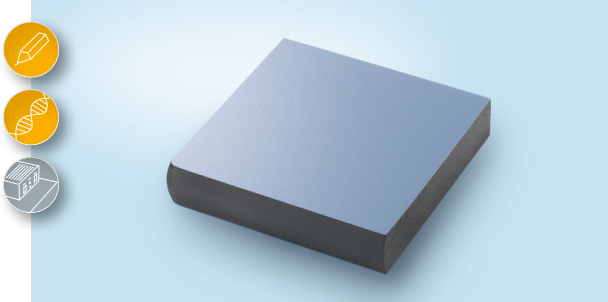
Melamine Standard



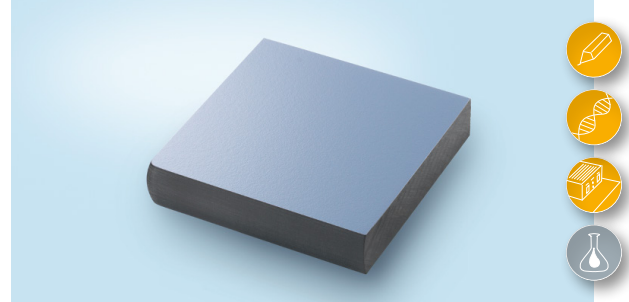
Melamine TopResist®



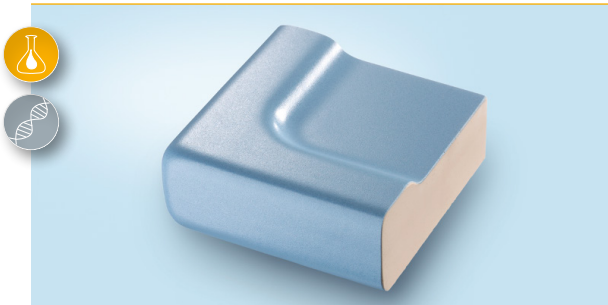
Trespa® TopLab®BASE



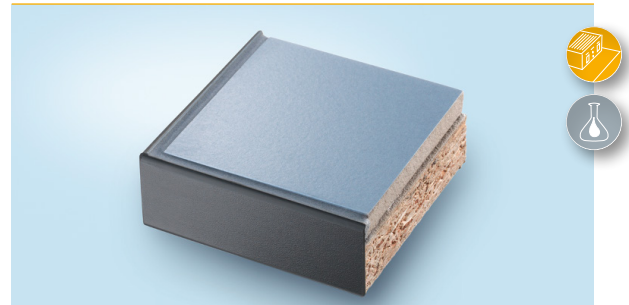
TRESPA TopLab®PLUS



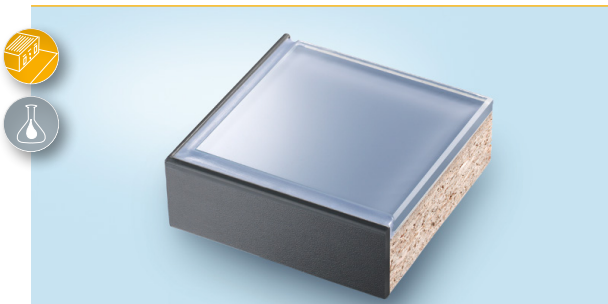
Solid ceramic



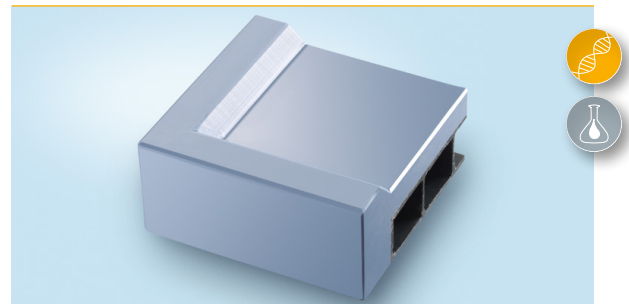
Composite ceramic



Glass



Polypropylene



Epoxy resin (Epoxy)



Stainless steel



● well suited

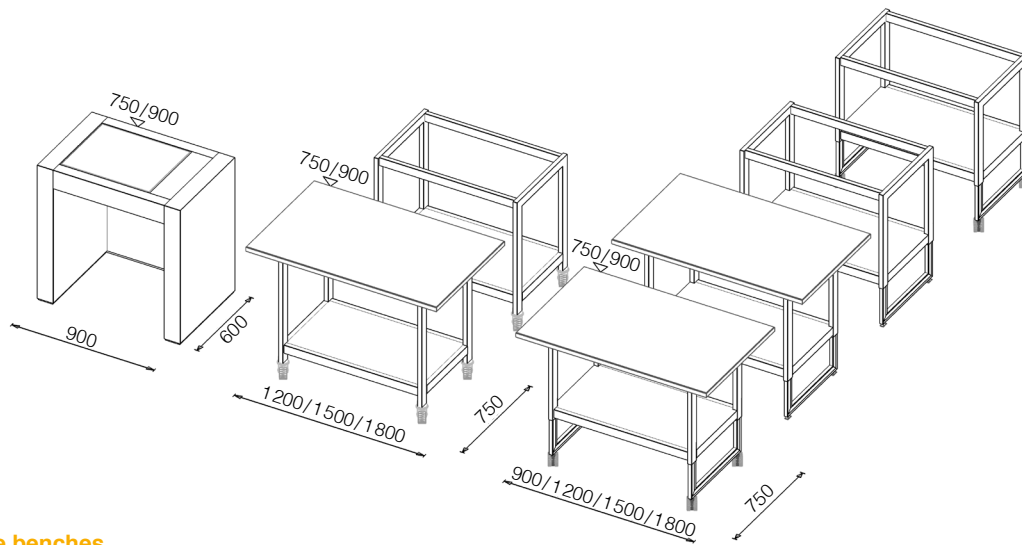
● suited to a certain extent

Single benches and frames

Mobile, load-bearing, extremely precise



Overview Benches



Single benches

Dimensions in mm

| | Width | | | | Height | | Worktop depth | |
|------------------------------|---------|------|------|------|--------------------|-----|---------------|-----|
| Single bench without castors | 900 | 1200 | 1500 | 1800 | variable 720 - 960 | | 600 | 750 |
| Single bench with castors | 900 | 1200 | 1500 | 1800 | variable 720 - 960 | | 600 | 750 |
| Heavy-duty table | – | 1200 | 1500 | 1800 | 750 | 900 | 600 | 750 |
| Balance bench, free-standing | 900 | – | – | – | 750 | 900 | 600 | – |
| Balance bench, integrated | ca. 900 | – | – | – | 750 | 900 | – | – |

Overview Table frames

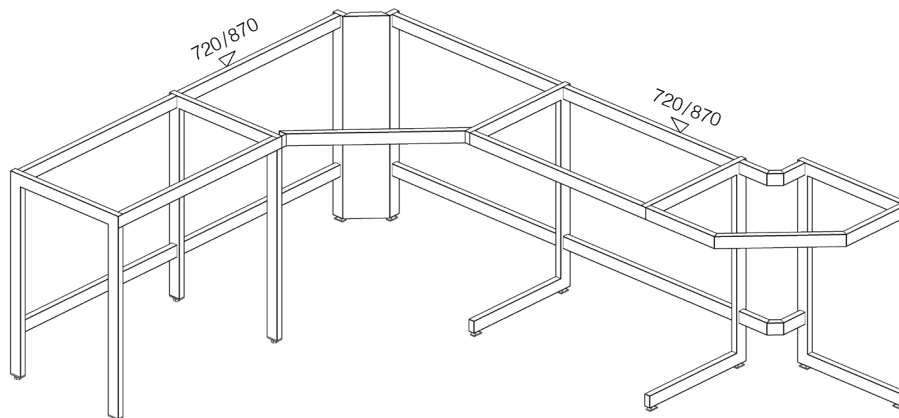


Table frames

Dimensions in mm

| | Width | | | | | Height | | Worktop depth | | |
|----------|-------|-----|------|------|------|--------|-----|---------------|-----|-----|
| A frames | 600 | 900 | 1200 | 1500 | 1800 | 720 | 870 | 600 | 750 | 900 |
| C frames | 600 | 900 | 1200 | 1500 | 1800 | 720 | 870 | 600 | 750 | 900 |

Types

- Balance bench free-standing or as integrated version
- Single benches with and without castors
- Table frame with worktops made of different materials:
 - Melamine TopResist® and Trespa TopLab®*PLUS*
 - work heights from 750mm (sitting height) to 900mm (standing height)

Description

Work place, storage space or footprint for test setups and devices – **EXPLORIS® benches** fulfil a variety of tasks in the laboratory. If fixed, they can be flexibly adjusted in height and adapted to uneven floors. On castors, they enable mobile working and the transport of heavy equipment.

A specialist is the balance bench, which can be freestanding or installed in a worktop assembly, and is available in sitting and standing heights. Balance benches are used for the vibration-dampened installation of sensitive analytical balances, so that even the smallest quantities can be accurately weighed.

Designs laboratory single benches

- In sitting and standing work height
- In different widths
- With shelves
- Load capacity
 - single bench, fixed 300 kg
 - single bench, mobile 100 kg
 - heavy-duty table:
 - maximum point load per table: 200 kg
 - maximum surface load per table: 400 kg

Description: Frames

The frame is the backbone of every workplace – flexible and resistant at the same time. It not only supports the worktop, but also suspended under-bench cabinets.

Especially for the octagonal worktops and under-bench cabinets so typical of KÖTTERMANN, there are suitable frames in geometries from 90° to 360°.

Designs balance benches

- Heights
 - 750 mm and 900 mm
- Width
 - 900 mm
- Depths
 - free-standing: 600 mm
 - integrated into the laboratory worktop: 500 mm

Properties and Benefits

- As A-frame version for particularly high load capacity
- As C-frame version for extra legroom
- High load capacity in both versions:
 - C-frame: 250 kg / sqm bench surface
 - A-frame: 350 kg / sqm bench surface
- Floor under workbenches easily accessible for cleaning

Basins and sinks

A clean solution



Description

Wherever water is used in the laboratory, practical solutions are required. Whether basins or complete sinks - that depends entirely on your ideas and the available space. **EXPLORIS® Laboratory sinks and basins**, together with water fittings, draining racks, soap and towel dispensers and eye showers, form a well-equipped cleaning workplace that is adapted to safety standards.

Properties and Benefits

- For materials for basins
- Different installation types
 - flush installation
 - fitted with marine edge
 - underslung
 - welded without joints
- Various combinations of
 - basins and worktop materials
 - sinks in different versions and materials

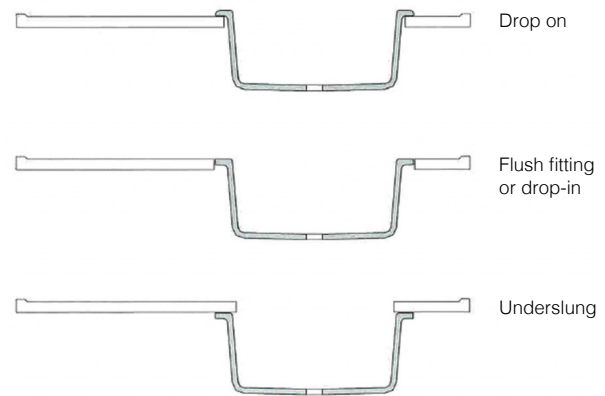
Types of basins

- Four materials
 - solid ceramic, stainless steel, polypropylene, epoxy
- Different installation types (depending on material)
 - flush installation
 - fitted with marine edge
 - underslung
 - welded without joints

Types of sinks

- Three materials
 - ceramic, stainless steel, polypropylene
- Basins left, centred, right
- Drainboard left or right

Installation options



Basins and sinks

Dimensions in mm

| | Materials | Widths | Depths | Equipment options |
|-------------|--|-----------|-----------|--|
| Basins | Ceramic, stainless steel, Polypropylene, epoxy | 250 - 895 | 100 - 500 | Mounted in the worktop, flush installation, underslung |
| Sinks | Ceramic, stainless steel, Polypropylene | 1 200 | 600 750 | Basins left/right, drainboard left/right |
| Front sinks | Ceramic, stainless steel, Polypropylene, epoxy, Trespa® TopLab ^{PLUS} | 1 350 | 680 | Basins centred, drainboard left and right |
| | | 1 500 | 680 | |
| | | 1 650 | 680 | |
| | | 1 800 | 680 | |
| | | 1 950 | 680 | |

Accessories

Things that make (laboratory) life easier

General

A laboratory has to meet many different requirements, which can change over time. A large additional range with laboratory chairs, shelves and cabinet pull-outs offer individual and practical equipment options.

Drawers



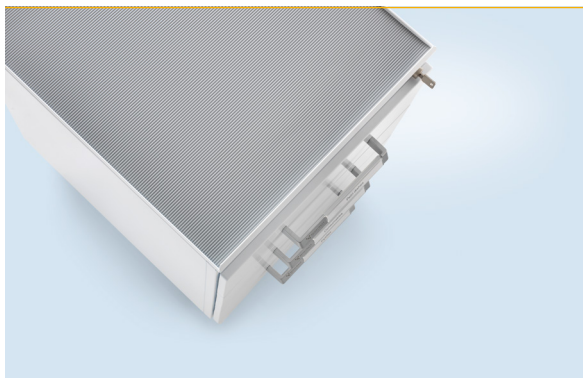
- With automatic pull-in function and stop damping (full-extension drawers)
- Interior drawers
- Pencil tray

Drawer dividers



- Plug-in system-set-divider for cabinet w 600mm, 1 crossbeam, frame with 2 compartments and 6 compartments
- Drawer divider for cabinet w 600mm, 10 stainless steel boxes, 1 terminal block, type Inox

Rubber mats



- For the tops of cabinets on castors
- As inlays for drawers

Ladders



- Rolling steps
- Stepladder
- Hook-in ladders for tall storage cabinets

PC accessories



- monitor holder, keyboard pull-outs, ducts and cable bushing

Cleaning accessories



- Draining rack, soap dispenser, disinfectant dispenser, towel dispenser

Cleaning set



- For work surfaces and furniture fronts
- Cleanliness and hygiene for safe and precise working
- Specially tested for the KÖTTERMANN surfaces and materials

Chairs



- Chairs, stools and standing aids
- Partially height-adjustable
- With and without castors

Shelves

- Shelves for underbench, tall storage, top-mounted and wall-mounted cabinets
- 30kg load capacity

Waste bin

- For underbench cabinets with waste collector unit

Equipment pull-outs

- For the installation in underbench cabinets
- 30kg load capacity

www.koettermann.com
www.kottermann.com

KÖTTERMANN GMBH & CO KG

Industriestraße 2-10
DE - 31311 Uetze/Hänigsen
Phone: + 49 5147 976-0
E-Mail: exploris@koettermann.com

AUSTRIA

KÖTTERMANN GMBH AUSTRIA

Autokaderstraße 29 – Bauteil 1
AT - 1210 Wien
Phone: + 43 1 544937420
E-Mail: exploris.at@koettermann.com

BELGIUM

KÖTTERMANN BVBA

Keesinglaan 26
BE - 2100 Antwerpen
Phone: + 32 3 3609790
E-Mail: exploris.be@kottermann.com

FRANCE

KÖTTERMANN SYSTEMLABOR S.A.S.

Parc Business Airport
Bât. Epsilon, 80 rue Condorcet
FR - 38090 Vaulx - Milieu
Phone: + 33 474 952380
E-Mail: exploris.fr@koettermann.com

POLAND

KÖTTERMANN SP. Z O.O.

ul. Szamocka 8
PL - 01 - 748 Warszawa
Phone: + 48 22 8324760
E-Mail: exploris.pl@koettermann.com

SPAIN

KÖTTERMANN SYSTEMLABOR, S.A.

Calle Consuegra 7, 3°C
ES - 28036 Madrid
Phone: + 34 91 7320110
E-Mail: exploris.es@koettermann.com

SWITZERLAND

KÖTTERMANN AG

Industriestrasse 37
CH - 8625 Gossau ZH
Phone: + 41 44 9361809
E-Mail: exploris.ch@koettermann.com

THE NETHERLANDS

KÖTTERMANN B.V.

Nieuwe Prinsenkade 3
NL - 4811 VC Breda
Phone: + 31 76 2030044
E-Mail: exploris.nl@kottermann.com

UK & IRELAND

KÖTTERMANN LTD.

3 The Courtyard, Furlong Road
Bourne End
UK - Buckinghamshire SL8 5AU
Phone: + 44 1628 532211
E-Mail: exploris.uk@koettermann.com